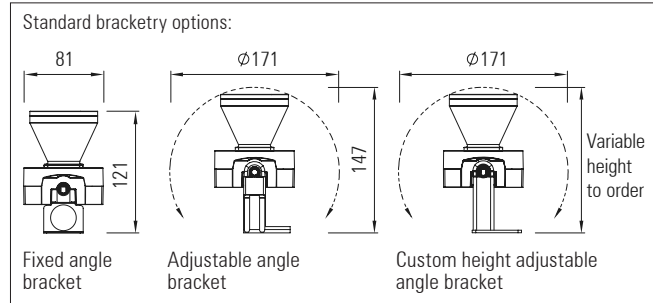
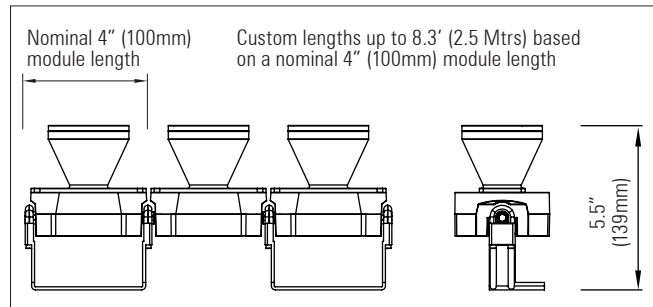
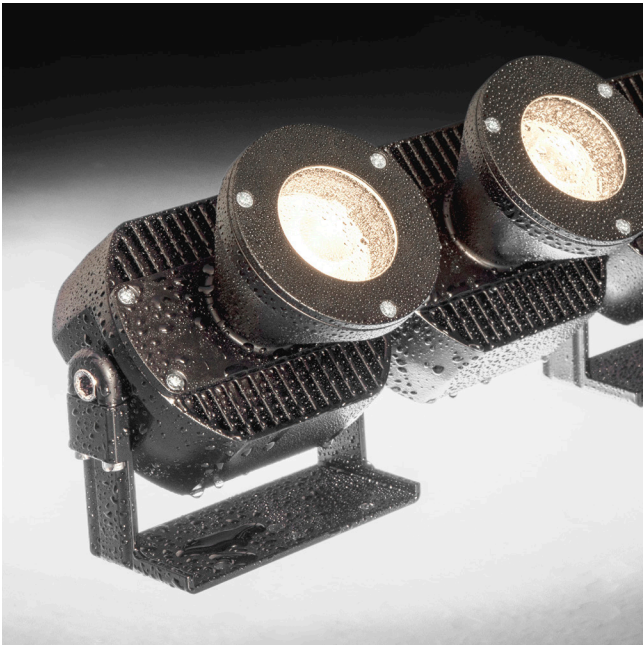


## 3D LED Flex system 100 IP66 Class 2

1 x high-power LED with 4° beam lens per module

Modular, 3D flexible LED linear lighting system



### 1 x high-power LED with ultra-narrow beam lens per module

Modular, 3D flexible LED linear lighting system

#### Product description:

For use in exterior wall grazing and decorative lighting applications where the building surfaces are non linear with curved profiles

Each module comprises of: 1 x Cree XHP35 HI LED with a LEDIL LEIA lens system which produces a 4° spotlight beam

An additional sublens can produce a narrow high-aspect (50° + 5°) oval beam

Up to 10 Watts per 4" (100mm) module

30 Volt - 48 Volt DC supply depending on application

Flexible in 3 dimensions - Articulated ball-joint system between modules

LED pitch is maintained between the modules

Side, back and end power feed and connector options allow for continuous lighting with no dark areas between fixtures. 17.5 Amp IP68 connectors join fixtures together on-site

Integral LV constant current driver

Dimming options available: 1-10V, DMX and DALI. Separate dimming channel

Various LED colour temperature and CRI options available

Satin black, satin white or any RAL paint colour finish

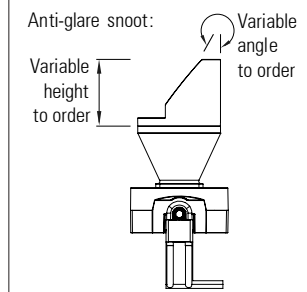
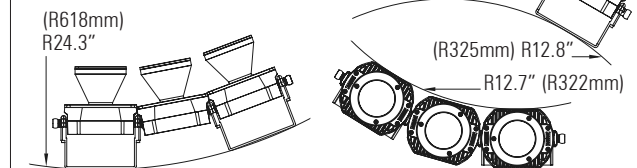
Custom lengths based on a 4" (100 mm) module up to 8.3' (2.5 mtrs)

Various mounting options and bracket types are available

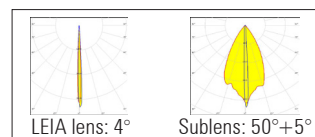
Low iron UV block glass covers or UV stable polycarbonate windows

Minimum bend radii using standard ball-joints with adjustable angle brackets:

(Other ball-joints can give different bend radii where needed)



Up to 2,042 lumens per ft  
(Up to 6,700 Lumens per Mtr)



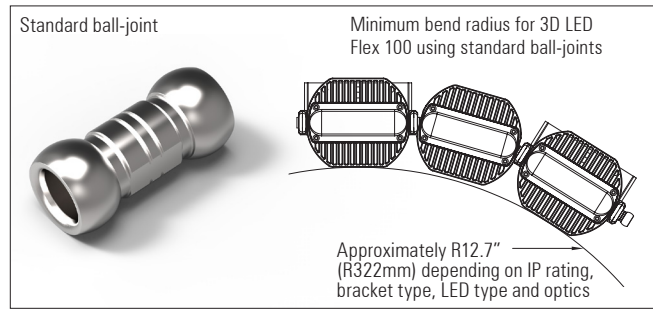
Product Code	No. of LEDs	IP	Length	LED Type	Colour Temp. (K)	CRI	Optics (°)	Anti-glare Snoot	Bracket Type	Cover	Finish
RAD 3D LED FLEX 100 IP66 ULTRA NARROW	10 LEDs per Mtr:	66	4" (100mm)	Cree: XHP35 HI	27=2,700k 30=3,000k 35=3,500k 40=4,000k 45=4,500k 50=5,000k	80 90	LEDIL LEIA lens: Ultra-narrow 4° spot beam  + sublens: Ultra-narrow 50° + 5° oval beam	Cut-angle: 0° - 75° (increments of 5°)  Height: specify height	Adjustable angle	Low iron UV block glass  UV stable PC	Black White Any RAL colour
	(100mm pitch between LEDs)		-increments of 4" (100mm) up to-  8.3' (2.5 mtrs)		Fixed angle				Custom height adjustable angle (specify leg height)		

**Product description:**

Radiant's 3D LED Flex 100 system comprises a patented articulated ball-joint system which links the heatsink modules.

The ball-joints system allows the strips to bend and twist in 3 dimensions, so that they can follow any building contours, whilst maintaining a constant LED pitch.

There are various types of ball-joint to suit different applications, some of which can be seen on this data sheet. Please contact Radiant to discuss custom solutions.



Product Code	Material	Length
STANDARD BALL-JOINT BALL-JOINT TIGHT BENDS BALL-JOINT LONG	Nickel-plated brass	(For longer ball-joints) 3.9" (100mm) 7.9" (200mm) 11.8" (300mm) Custom lengths

